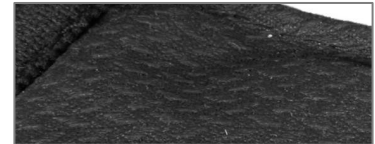


When you need more than 100%

We developed your valuable equipment to resist most aggressive conditions during it is protecting the user. Missions get extreme, when these conditions are impacting on your equipment repeatedly or over longer periods. For example training situations might stress the respiratory protection equipment to such an extent, that investment in maintenance, repair and replacement parts might be considerable.

As a further development of our proven eXXtreme harness this new harness has been designed to meet the toughest demands for protection and durability. With improved materials and new design features, it once again sets new standards.



Stable and Rugged Construction

For our new eXXtreme harness we are intentional using materials, which could also be applied e.g. in turnout gear. Therefore they were tested according to requirements of the HuPF norm (continuative norm to DIN EN 469)

- Exceptionally resistant to flame and heat: main fabric made of 100% Kevlar
- The silicone-carbon coating strengthened and closed the surface of the main fabric which makes it extremely tear and cut proof and nearly immune to abrasion and cleaning damages.
 - Almost immune against dirt or chemicals like e.g. fuels or oils
 - Easy to clean due to a natural wetness absorbing barrier
- The protective sleeves are easily exchangeable and cover the most exposed areas of the air supply lines.
- Push buttons on the protective tubes make the fixing more robust and less prone to dirt.
 - To prevent unintended opening the first button can be opened relieved only in one direction.
- Metal buckles are offering durable stability on frequently and strong burdened parts.

Design Features

- Wide reflector areas on the protective sleeves ensure high visibility in low light situations.
- The look of the new surface coating of the structural fabric without visible pores expresses the exceptionally ruggedness of the new eXXtreme harness.
- Features like ergonomics and ideal wearing comfort stay self-evident. They are based on the sustained proven dynamic fit of the AirMaXX SCBA harness.

Certificate

- Tested according to EN 137:2007 (flame engulfment test)
- Certified for series AirMaXX and AirGo

Ordering Information

- 10145843 eXXtreme Upgrade-kit, black (incl. stainless steel cylinder retaining clamp)
- 10145844 eXXtreme protective tunnel, black, left
- 10145845 eXXtreme protective tunnel, black, right
- 10152140 eXXtreme Shoulder strap, left, complete w/o tunnel
- 10152141 eXXtreme Shoulder strap, right, complete w/o tunnel
- 10152142 eXXtreme Hipbelt, complete, black
- ...-EXX eXXtreme harness, black, as SCBA option (ATO-Code)