

# alphaCONTROL 2

Next generation of respiratory protection monitoring software



*The MSA alphaCONTROL 2 software is part of the alpha Personal Network respiratory protection monitoring system, which consists of modular and wireless components, that can be individually integrated and support a variety of applications.*

*alphaCONTROL 2 facilitates an electronic, and optionally telemetric respiratory monitoring. The new and improved entry control software was developed with ease of use at the forefront. It has the ability to document your operations and create an operational report in seconds.*

*alphaCONTROL 2 is a natural progression from your conventional tally board. It can deliver all the information that your tally board supplies as well as monitoring the air supply of individual users in combination gas measurements. Furthermore, the operational documentation is more reliable and efficient.*

*For more information please see alpha Personal Network leaflet 01-050.2.*



## Complete monitoring

In challenging environments, the fire-fighter must be able to rely on his self-contained breathing apparatus as well as his officer-in-charge. The officer-in-charge must always be sufficiently informed about the condition of his emergency services.

alphaCONTROL 2 attaches great importance on the presentation of the situation-relevant information. The interaction concept allows the user to have the best possible understanding of the particular situations.

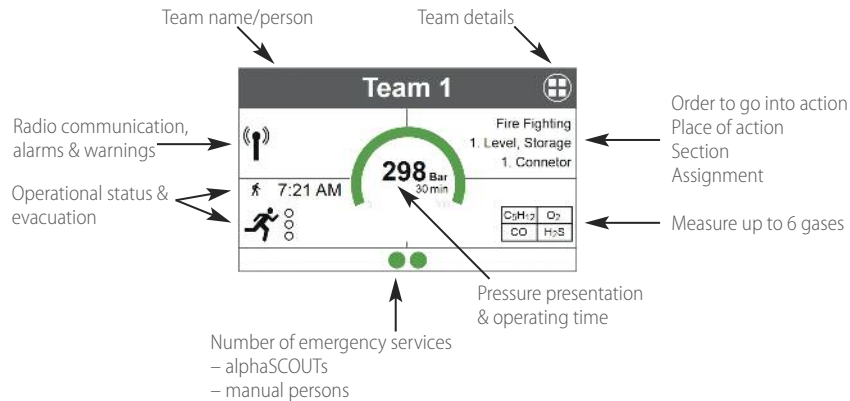
alphaBASE and alphaSCOUT automatically connect via data radio connection and facilitate the exchange of vital information between the incident teams and the respiratory protection monitoring system.

The respiratory protective device user has an exact overview of the air supply situation of the emergency services. Based on the information from alphaSCOUT and optionally ALTAIR 5X W-USB, multi-gas detector, the officer-in-charge is provided with important information to assess the situation and condition.

## Reliable & versatile monitoring

The screen presentation enables the user to work with a freely scalable number of team members and teams during each respiratory protection incident and maintain the overview at all times.

The application permanently assesses the information which is available and presents the respective critical value of a team in real time. The officer-in-charge even has direct access to the individual pressure levels of all team members.



Software application makes it possible to simply browse between several pages in order to display more information, if required, e.g., the current measured values of ALTAIR 5X W-USB and nevertheless, keep an eye on the air supply.

## Views

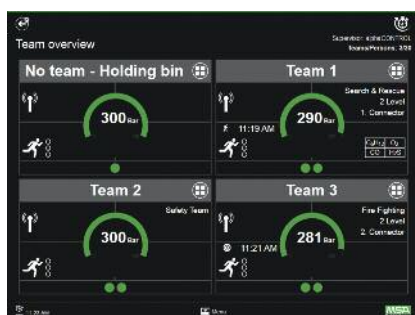
alphaCONTROL 2 makes it possible to use different views when monitoring, retain the overview even in case of an incident escalation.

Software enables a simple switch between day and night mode to reduce dazzling effects.

## Team view





In team view person elements are presented in teams to the operator. Through the simplified presentation the operator has an immediate overview. Assessment of the situation becomes possible and increases individual safety.

The team overview uses the entire screen area available without scroll bars. All elements are dynamically and individually scaled according to number of shown teams without losing sight of what is important.



## Operational status

The operational status report facilitates the user to have a detailed view of the status of the emergency services at all times. Thus, decisions on dispatching other forces can be made easily and quickly in correlation with an effective risk prevention is guaranteed. In the process, the operational status of alphaSCOUT can be transmitted per device radio communication or be set manually after radio notification.

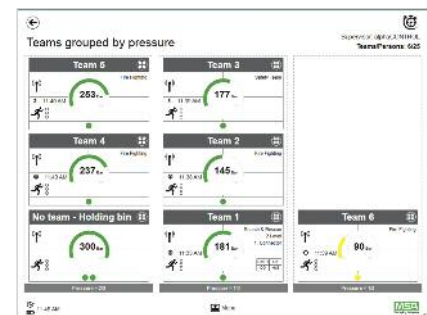
-  Registration of the emergency service
-  On route to the incident scene
-  Incident scene reached
-  Retreat started



## Residual pressure view

The residual pressure view sub-divides the screen into three areas and sorts the group elements according to cylinder pressure. In the process a corresponding fixed rate setting in thirds was carried out and the teams were grouped according to  $>2/3$ ,  $>1/3$ , and  $<1/3$ .

Individual calculation of the latest retreat time and pressure takes place according to the  $1/3-2/3$  rule.



## Documentation & statistics

After the operation, reports can be generated with a mouse click. Thus, the user can analyse the information displayed according to their own requirements.

Furthermore, all events and actions are saved in an interactive playback and can be viewed and analysed again after successful completion.

The automatic documentation of the application in conjunction with the integrated operation storage of alphaSCOUT facilitates complete documentation for the user which meet the highest demands.



## Central monitoring – decentralised managed

alphaCONTROL 2 supports Windows XP/7/8/8.1 with the current Service Pack as a local or network installation.

In the network, alphaCONTROL 2 uses existing structures to share the hardware interfaces, therefore, e.g., it is possible to connect several systems together and guarantee a central monitoring of all device wearers and to fulfil the individual escalation levels.

## Ordering information

Order number	Description
<b>Software</b>	
10153880	alphaCONTROL 2 – Software
10153880-SP	alphaCONTROL 2 – Software Basic
<b>Hardware</b>	
10076041	Xplore TABLET PC (incl. operating system), alphaBASE (battery operation), accessories (2 accumulators, charging device) in one robust suitcase – incl. alphaCONTROL 2
10068805	Xplore TABLET PC (incl. operating system)
10070795	alphaBASE (battery operation)*, EU incl. alphaCONTROL 2 – Software
10058214	alphaBASE receiver box*, EU incl. alphaCONTROL 2 – Software
10058212	alphaSCOUT TM complete with batteries and alphaTAG
10065875	alphaTAG writer
10065873	alphaTAG (5 pieces)

\* Intended for the use in combination with alphaBASE and alphaTAG writer where at least one free USB port is required. alphaBASE (battery operation) can be used with the Xplore TABLET or in conjunction with the optional USB adapter.

### Your direct contact

#### MSA Europe

Thiemannstrasse 1  
12059 Berlin  
Germany  
Phone +49 (0)30 68 86-0  
Fax +49 (0)30 68 86-15 58  
E-mail info.de@MSAsafety.com

#### MSA Corporate Center

1000 Cranberry Woods Drive  
Cranberry Township, PA 16066  
USA  
Phone +1-724-776-8600  
E-mail info.us@MSAsafety.com